

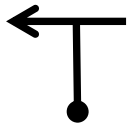
# NAVIGATION USED ON THE EVENT

## SPOT HEIGHTS

Spot heights are the height above sea level. The majority are marked on the map with a small dot . **327** and the height. The route will only pass through the spot heights listed complete with dot and in the order listed in the handout, all others should be avoided. The later edition OS maps now show on road cycle routes by a series of green circles, which are sometimes overprinted on the small dot of spot heights. These spot heights will be listed in the navigation and identified as having their dot hidden or partially hidden by the cycle path circle. This will allow the latest and previous editions of the OS map to be used.

## TULIPS

These are simple diagrams of the road junctions with the ball indicating where you come from and the arrow indicating where you are going to. In this example you approach a T junction and are turning left. When used in the Plot and Bash navigation all the coloured junctions on the route will be included, even if the road going to the right in this example, becomes a 'dead end' or changes to a 'white' road. Tulips may be drawn as depicted on the map or with straight lines.



## TULIP ROADBOOK

The road book only lists junctions where you have to comply with an instruction. The distance from the start of the section and a tulip diagram are shown. See example on opposite page.

## JUNCTION COLOURS

Roads colours from the map these are: **Green**, **Red**, **Brown**, and **Yellow**. Each junction on the route is described in terms of the colours of the roads involved. The entry road is given first and the exit road last.

## MAP LEGEND SYMBOLS and /or LETTERS

The route can be defined by passing through or past legend symbols and also by the letters that are overprinted in whole or part on the road. It is only the overprinted letters (in whole or part) that are given in the route instruction. In the case of a symbol the whole symbol will be given. They must be past in the order given and avoid any not listed.

## GRID LINES

The thin blue grid lines that run up and across the map are used to define the route by crossing the quoted grid line numbers. As with the spot heights they must be crossed in the order given. A variation can be the entry or exit direction (N S E W) into / from grid squares.

## 'LONDON RALLY' MARKED MAP

Named after the famous rally that was most associated with this method of route presentation in the 1950/60s. Enclosed in this roadbook is a copy of a section of OS map 98 with a number of locations already marked onto the map. You have to visit the locations only listed and in the order given by the handout.